

SAMSARA

"JAMPA" VILLA



JAMPA

Designed for those desiring more space around their home Jampa's smaller size permits more generous terraces and gardens.

Entry Level

Passage through the entrance pavilion is a transition from peace to tranquility. From the entry deck one can survey the entertainment level and the stunning view beyond.

Entertainment Level

The 10m 'infinity edge' pool forms the focus for this well laid out entertainment suite. Open tropical living is the theme with lightly structured roof forms which provide cooling shade from the sun. Folding doors can be fully opened to take advantage of the cool sea breeze.

Bedroom Level

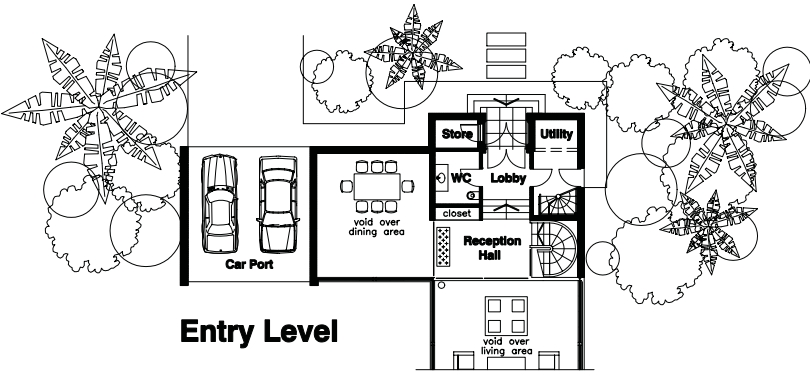
Jampa's three bedrooms all enjoy 'picture window' sea views. Additional family and recreational accommodation create a private suite.



Area Schedule

ENTRY LEVEL

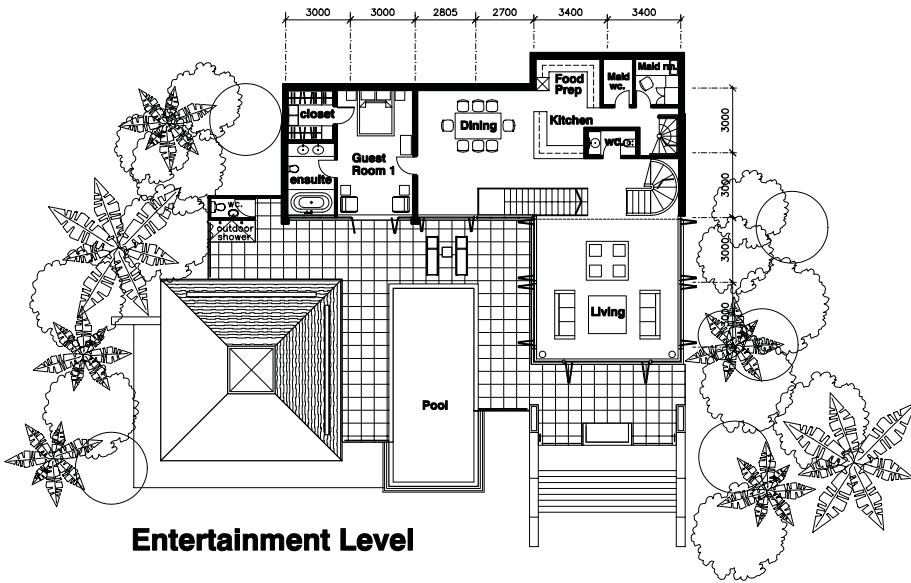
Enclosed Space	
Reception Hall	21.9m ²
WC	5.8m ²
Store	4.5m ²
Utility/Meters	12.7m ²
Total Enclosed Space	44.9m²
Covered Area	
Car Port	38.3m ²
Total Covered Area	38.3m²
Total Area Under Roof	83.2m²



Entry Level

ENTERTAINMENT LEVEL

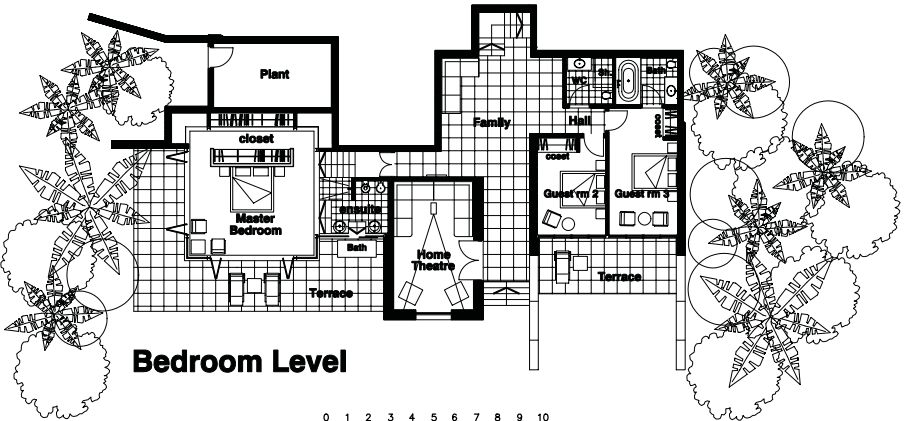
Enclosed Space	
Living Area	58.1m ²
Dining Area	40.2m ²
Guest Suite	37.7m ²
WC	3.7m ²
Kitchen & Prep.	16.1m ²
Maid's Quarters	14.7m ²
Total Enclosed Space	170.5m²
Covered Area	
Additional Roofed Area	44.3m ²
Total Covered Area	44.3m²
Total Area Under Roof	214.8m²



Entertainment Level

BEDROOM LEVEL

Enclosed Space	
Master Bedroom Suite	56.9m ²
Bedroom 2	16.1m ²
Bedroom 3 Suite	30.0m ²
Multi-use Area	28.0m ²
Family Bathroom	5.9m ²
Total Enclosed Space	136.9m²
Covered Area	
Family Area	51.1m ²
Additional Roofed Area	36.8m ²
Plant Room	19.6m ²
Total Covered Area	107.5m²
Total Area Under Roof	244.4m²
Terraced Areas	
Master Bedroom Terrace	51.2m ²
Bedroom Terraces	16.0m ²
Total Terraced Area	67.2m²
Total Enclosed Space	352.3m²
Total Area Under Roof	542.4m²
Total Terraced Area	223.6m²



Bedroom Level

Illustrations shown in this document are artist's impressions. Floor plans, area schedules and all details are subject to change

phone + 66 76 325 274
www.samsaraphuket.com

fax + 66 76 325 277
info@samsaraphuket.com

© 2001 - Asia Island Homes